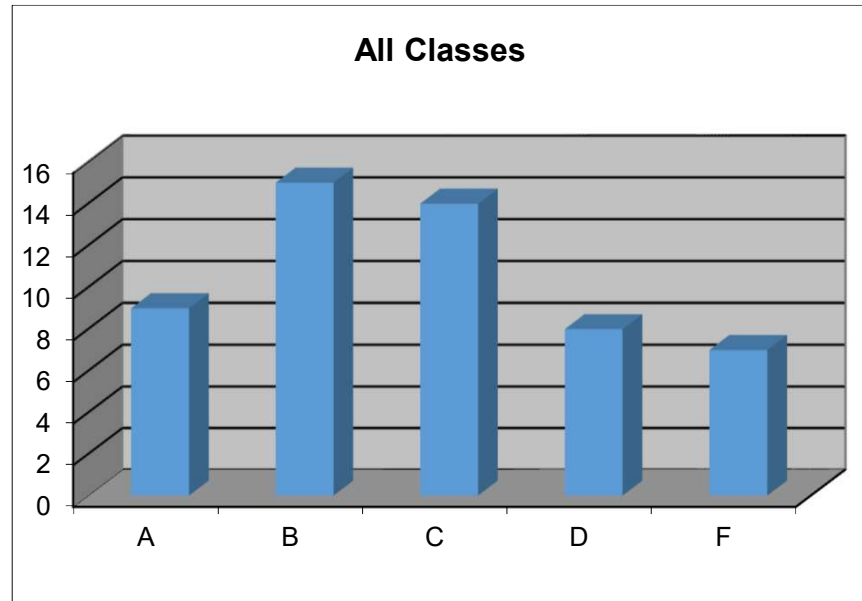


		Grade	MC correct out of 100	FR wrong out of 100
5P	A	98	94	2
3C	A	97	91	1
5Q	A	96	95	8
9A	A	95	90	4
5L	A	94	85	1
5T	A	94	84	1
12H	A	93	87	5
3A	A	92	84	4
3E	A	91	85	8
3B	B	89	80	6
5K	B	89	88	14
5E	B	87	81	11
9H	B	87	91	22
5C	B	85	81	15
5N	B	84	70	6
12N	B	84	79	16
5R	B	83	78	16
12D	B	83	87	25
5A	B	83	81	20
5F	B	83	78	17
3L	B	81	77	19
5H	B	81	74	16
5Y	B	81	79	22
9K	B	81	68	11
12J	C	78	65	13

9 A's  
15 B's  
14 C's  
8 D's  
7 F's

Curve  
2  
Average  
76.0

All Classes Average



A B C D F  
9 15 14 8 7

12M	C	78	80	29
5M	C	77	64	14
3N	C	77	81	32
12F	C	77	75	26
5D	C	76	67	19
9F	C	76	67	20
9D	C	75	78	32
9E	C	71	62	24
12C	C	71	61	23
3P	C	71	69	32
12E	C	71	66	29
3K	C	70	77	42
5G	C	70	64	29
9C	D	68	78	47
12K	D	66	47	20
9J	D	65	69	43
5J	D	64	65	42
9B	D	64	65	42
5X	D	63	53	31
3M	D	63	73	52
12G	D	60	51	35
12A	F	59	60	46
3H	F	55	70	64
12L	F	55	61	56
3G	F	53	50	48
12B	F	53	47	45
3D	F	52	56	57
5S	F	50	58	72