

Name _____

Grade _____ Teacher _____

ARROWHEAD'S ART BLIZZARD BAG

** Please be sure to put your *FIRST AND LAST NAME* and *YOUR TEACHER'S NAME* on your drawing. Please bring your artwork to school and give to your Art teacher or your classroom teacher. Artwork may be completed on this page or a separate drawing paper.

Day 2: My Family as Animals

Think about the people in your family. If they were an animal, what animal would they be? Create a family portrait by drawing each person of your family as an animal and color it. Don't forget to include yourself! Think about detail, color, and background in your animal portrait.

Materials: Paper, pencil (or any writing utensil available)
Crayon, marker, or colored pencil- optional



Cats Here is a picture of a cat sitting down, viewed from the side. What shapes can you see in its body?



Here is a drawing of the same cat, broken down into simple shapes. Make sure that the shapes are the right size – for example, the head should not be too big compared to the body.



When you are happy with your rough drawing, draw an outline around the edge. Rub out any lines that you no longer need, but leave important ones such as the line of the chin.



Fill in the silhouette with color, adding details such as eyes and whiskers.



Sitting dog This dog has a fairly long neck, so the circles are some way apart.



Now that the fur has been colored in, the dog looks very realistic.



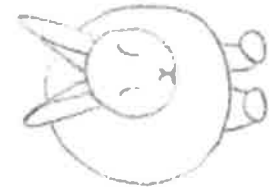
A dog begging is a little more complicated, but you can still see the circles and



oval shapes. Make sure you get the shapes of the nose and eye right.



Little details such as the turned over ear tips make it look like a real animal.



Rabbits (front view)
Because it's seen from a slight angle, the circle for the head is not quite in the middle of the body.



They have short necks, so the circle for the head overlaps the oval shape.



Rabbits (side view)
These are easy to draw because they are made up of lots of simple, rounded shapes.



You don't have to draw every single scale to make the fish look real.



Fish from the side
makes a bigger, wider oval



Make sure the fins are even, or the fish will look lopsided.



Front view of fish The fish has a very narrow body, so the oval shape is thin.



Budgerigars are tricky, but they still fit into circles and ovals.



Parrots have stubby tails, and are larger than budgerigars.



Don't try to paint every feather or you will get into a muddle.



Lizards have long bodies, so the oval shape is very stretched out.



Lizard from the front
The head is a circle with a triangle below.



They don't stay still for long, so you will have to watch carefully to see the main shapes.



The body looks round because it's seen from the front. This is called foreshortening.



Don't forget the forelock when you color in.



Pony (front view) The front view makes even easier shapes.



Then color it in.



For the side view of a pony, start like this.



The eyes bulge out slightly, and the ears are pointed.



Pony's head from front
A pony's head is fairly long, and broad at the top.



You will have to use triangles as well as ovals.



Pony's head from side
A pony's head is a little more difficult.



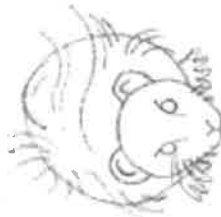
Does your guinea pig have long hair or short hair?



Guinea pig (side view)
From the side, you can see how big guinea pigs' heads are.



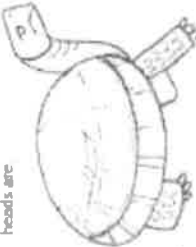
It's best to draw the shapes before you put in the fur.



Guinea pig (front view)
Use round shapes, the ears are half circles.



They have lovely patterns on their shells.



Turtle from side Turtles' necks look fairly long.



...and scaly, rectangular legs.



Turtle from front
Turtles have big oval shaped shells.

Name _____

Grade _____ Teacher _____

DAY 2: MY FAMILY AS ANIMALS DRAWING

